

Department of Public Works

Scot Cuthbertson, Executive Director
 719-520-6460
 Chuck Brown Transportation Complex
 3275 Akers Drive
 Colorado Springs, CO 80922
 www.ElPasoCo.com

Board of County Commissioners
 Holly Williams, District 1
 Carrie Geitner, District 2
 Stan VanderWerf, District 3
 Longinos Gonzalez, Jr., District 4
 Cami Bremer, District 5

Highway Advisory Commission Meeting Agenda Wednesday, February 17, 2021 – 9:00 AM

Virtual Meeting – TEAMS
 Join TEAMS Meeting
 Dial In (719) 283-1263
 Meeting ID: 904 780 454#

<u>Item</u>	<u>Presenter</u>	<u>Action</u>	<u>Time</u>
1. Call Meeting to Order	Chair		9:00
2. Pledge of Allegiance	Chair		
3. Absences	Chair	Approval	9:05
4. Meeting Minutes Approval January 20, 2021	Chair	Approval	9:10
5. Commissioner/Citizen Comments (on items not on the agenda) (3 minutes per citizen/ 15 minutes total)			9:15
CO Transportation Commissioner	Lisa Hickey		9:30
6. Staff Reports			
A. Administration	Scot Cuthbertson		9:50
B. Highway Division Update	Troy Wiitala		10:05
C. Engineering Division Update	Jennifer Irvine		10:15
D. Traffic Road Impact Fee Update	Victoria Chavez		10:30
E. Road Safety Plan	Victoria Chavez		10:40
F. PPRTA Extension Project Scoring Information	Victoria Chavez		10:50
7. Agenda Topics for the Next Meeting	Chair		10:55
8. Adjournment	Chair		11:00

Next Highway Advisory Commission Meeting – Wednesday, March 17, 2021 (tentatively)
 Virtual Meeting on TEAMS



El Paso County Highway Advisory Commission



*Troy Wiitala
Highway Manager*

February 17, 2021

Highway Updates

Graveling Program

- ✓ Started Jones Rd

Dust Abatement/Reclamation Program

- ✓ Working on Drennan Rd
- ✓ Contract hauling

Drainage

- ✓ Culvert Replacement on Walker Rd

Chip Sealing Program

- ✓ Start about June 1, 2021



Highway Updates

Snow Updates 2020-2021

- ✓ 13 snow events

Total FTEs

- ✓ 121/152; 5 seasonal hires
- ✓ Onboarding Operations Specialist
- ✓ Filled Calhan Highway Superintendent position
- ✓ Continue hiring process



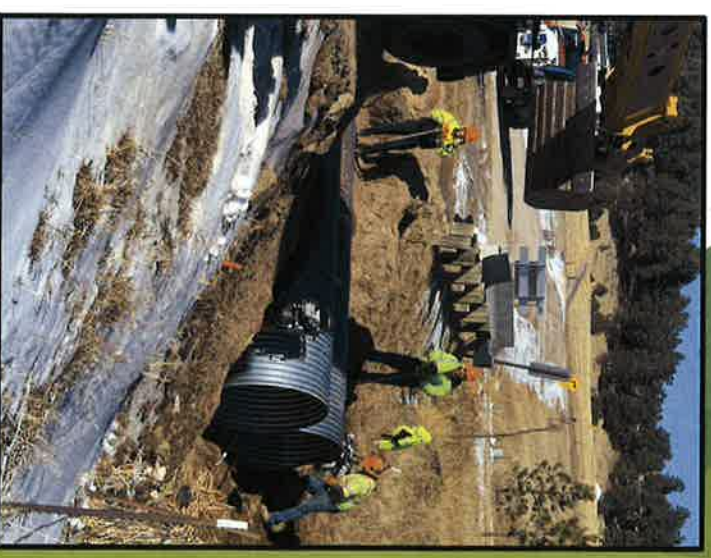
Jones Road



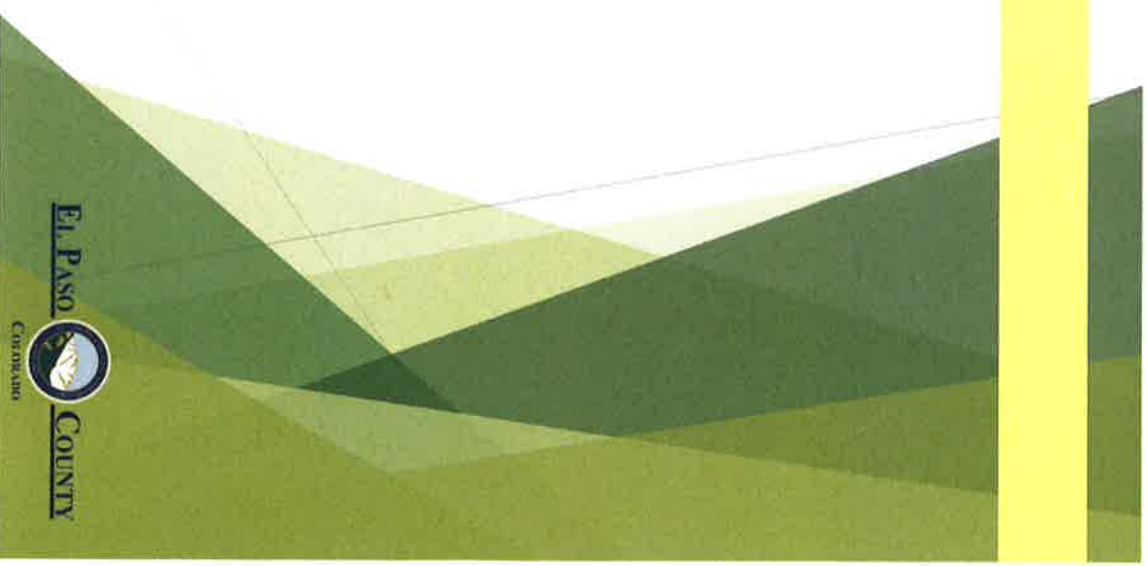
Drennan Road



Walker Road Culvert Replacement



Questions





Highway Advisory Commission

Wednesday 17 June 2020



*Jennifer Irvine
County Engineer*



EPC Engage

INTRODUCING...

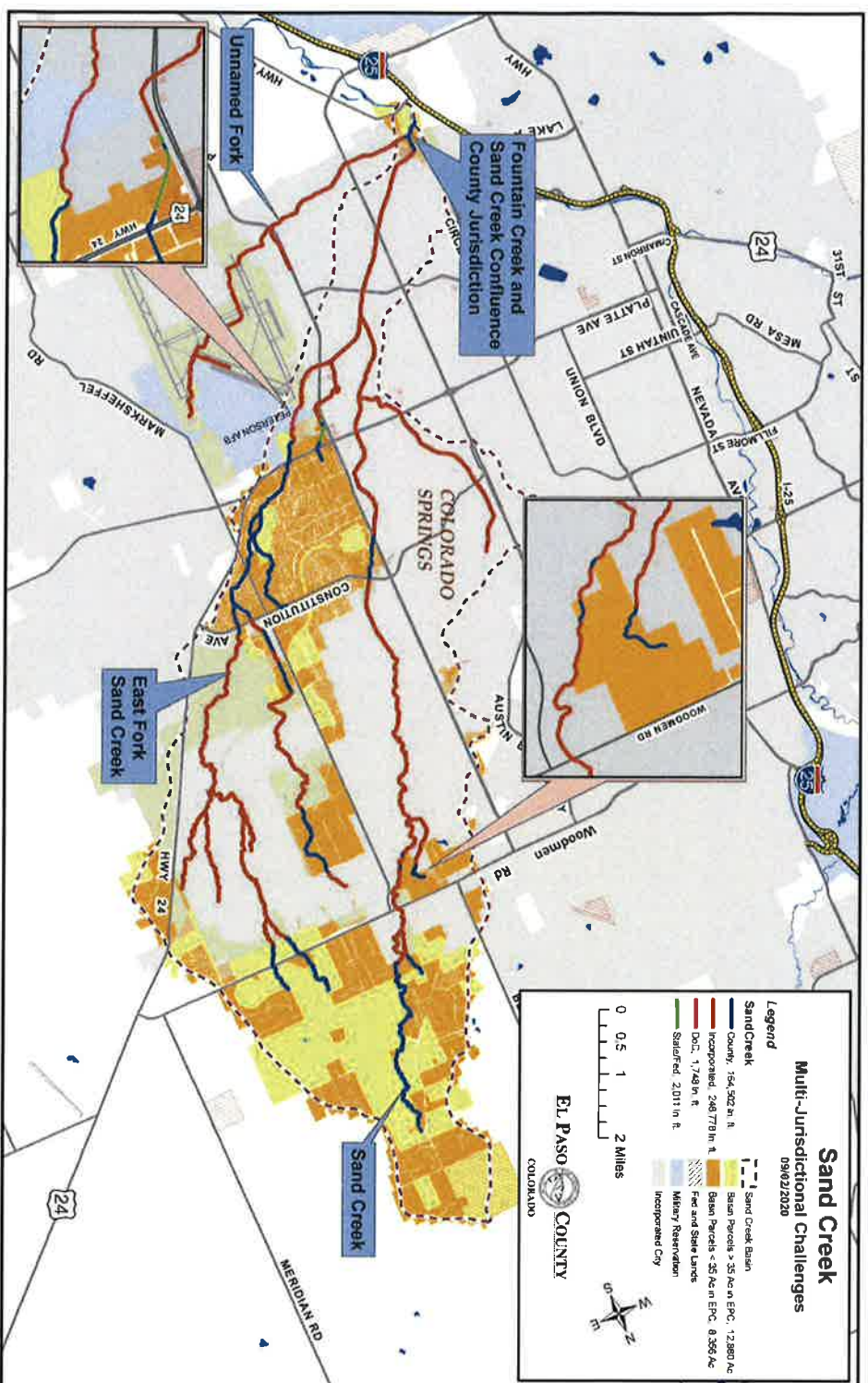
EPC *engage*



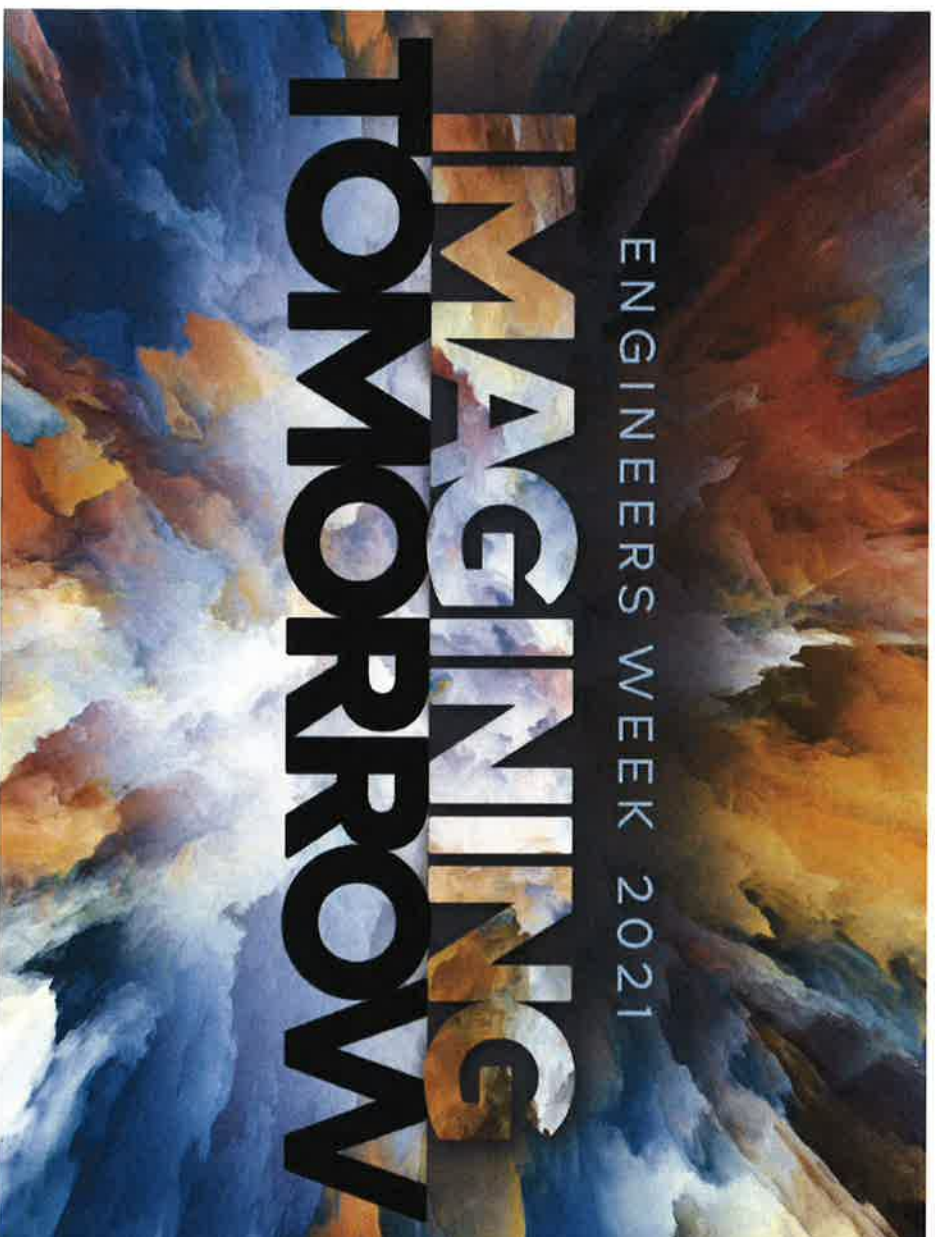
Peyton Area Drainage & Traffic Study



Sand Creek DBPS Update



Questions?



Road Impact Fee Program

2021 UPDATE



Background of the Road Impact Fee Program

Road Impact Fee Program adopted in November 2012

Road Impact Fee Program was updated in December 2016 to change the assessment of the fee from final plat to land use approval

In 2018, signals and roundabouts were added to the Program to improve fairness.

The Fee Program was designed with the help of a steering committee of people in the development community, HBA, citizens and staff members from PCD, DPW, and Finance.

Road Impact Fee Study Update



What is an Impact Fee?

Impact fees are one-time payments required of a new development to provide new or expanded public capital facilities needed to serve the impact from the new development. Based on CO Revised Statute 29-20-104.5.

Impact fees do NOT apply to existing homes and uses.

Impact fees are related to an adopted calculation and methodology which ties the fee to the measurable impact of the development.

Impact fees do not provide funding for the County to operate or maintain roads. The funds are all held in accounts that are completely separate from county funds.

More predictable, saves time and levels playing field for all landowners who develop.

A Program Built on Choice

This program is unique due to the array of choices for the developer.

Payment Choices

- PID allows payment over time
- Two PID options of 5 or 10 mills
- Can pay full fee to lock in the price – at final plat or building permit
- Other payment mechanism allowed

Options with how to use credits

- To pay future fees
- To trade or sell to someone else
- Wait for reimbursement

No other jurisdiction provides these choices.

Consensus Building and Public Policy

In 2018, County staff and a developer were invited to present how the county, HBA and groups of developers came to agreement on the fee amount, process and the use of Public Improvement Districts.

In 2014, the Fee Program won an APWA award for Innovation in Public Administration.

Growth &
Infrastructure Consortium

impact fees, capital planning and public finance

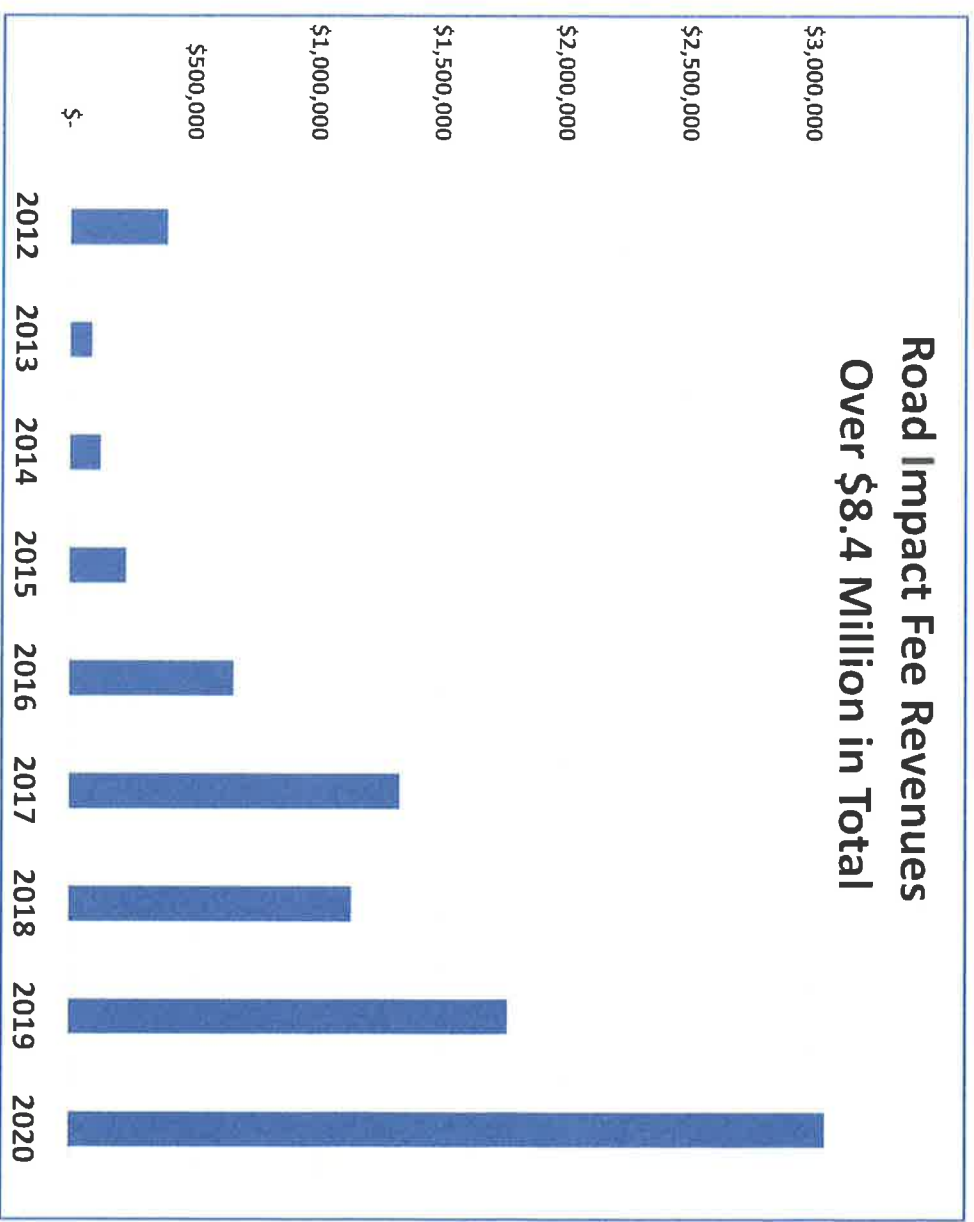


COLORADO CHAPTER

Road Impact Fee Schedule

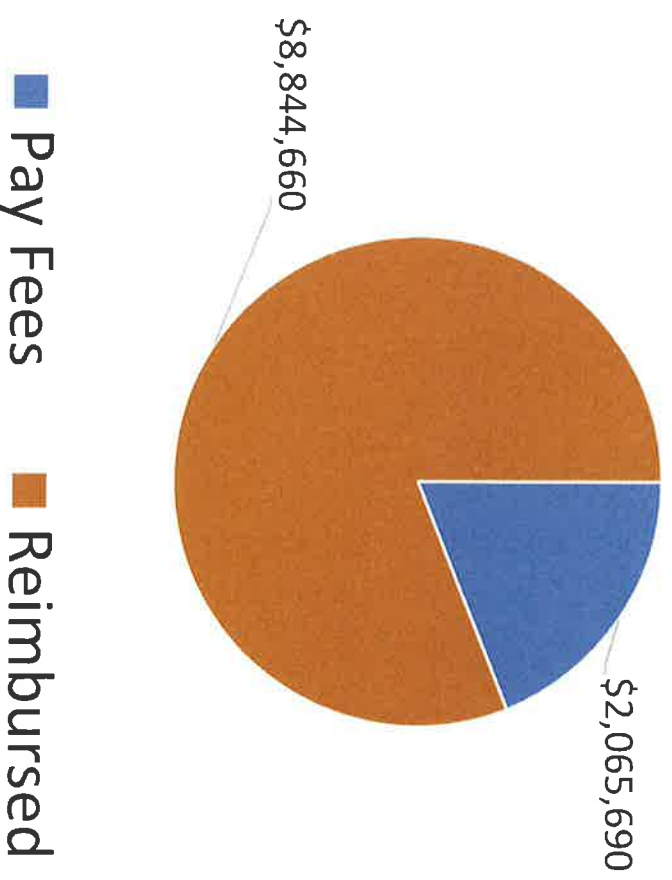
Land Use	Unit	Full Fee	Upfront Fee in in 5 Mill PID	Upfront Fee in 10 Mill PID
Single-Family	Dwelling	\$3,830	\$2,527	\$1,221
Multi-Family	Dwelling	\$2,407	\$1,934	\$1,458
Hotel/Motel	Room	\$2,806	\$2,153	\$1,498
General Commercial	1,000 sf	\$4,958	\$3,851	\$2,745
Convenience Comm.	1,000 sf	\$8,800	\$5,271	\$1,749
Office	1,000 sf	\$3,180	\$1,520	\$-
Public/Institutional	1,000 sf	\$3,372	\$1,645	\$-
Industrial	1,000 sf	\$3,651	\$2,372	\$1,093
Warehouse	1,000 sf	\$1,865	\$1,122	\$378
Mini Warehouse	1,000 sf	\$725	\$243	\$-

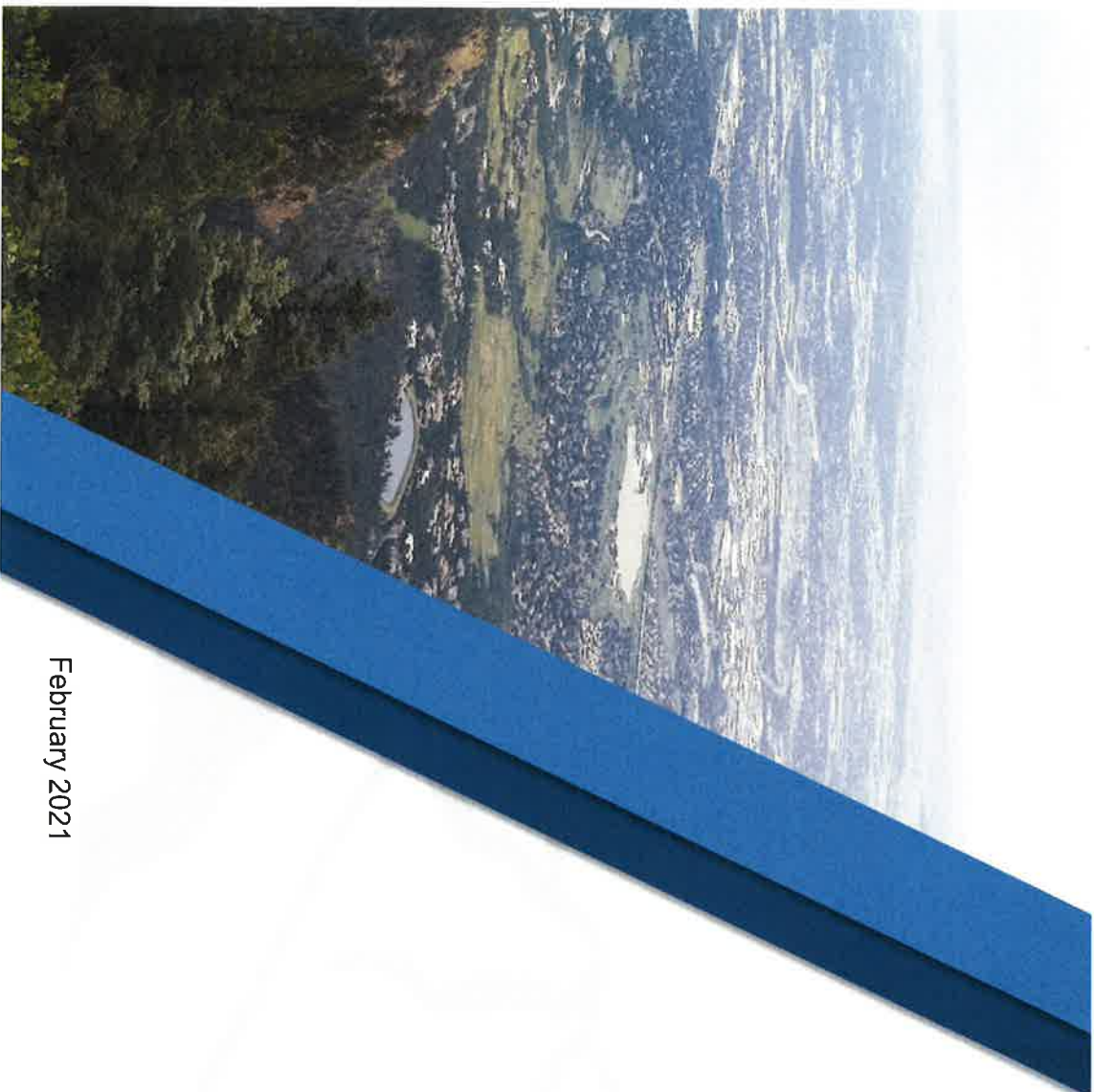
Revenues By Year



Credits are earned by building more roads than the fees charged for new development

How Credits Are Used





February 2021

El Paso County Road Safety Plan

presented to
Highway Advisory Commission

presented by
El Paso County Department of Public Works
Cambridge Systematics



Project Purpose

- Understand factors contributing to crashes throughout El Paso County
 - » Behaviors, roadway characteristics, types, external factors
- Determine where on the system crashes are overrepresented
- Identify and recommend effective solutions
- Provide specific suggestions to improve safety in the region
- Timeline and goals for implementation and evaluation



Safety Planning Process – Guiding Principles

- Comprehensive
- Data-driven
- Network-wide
- Multidisciplinary
- Proactive

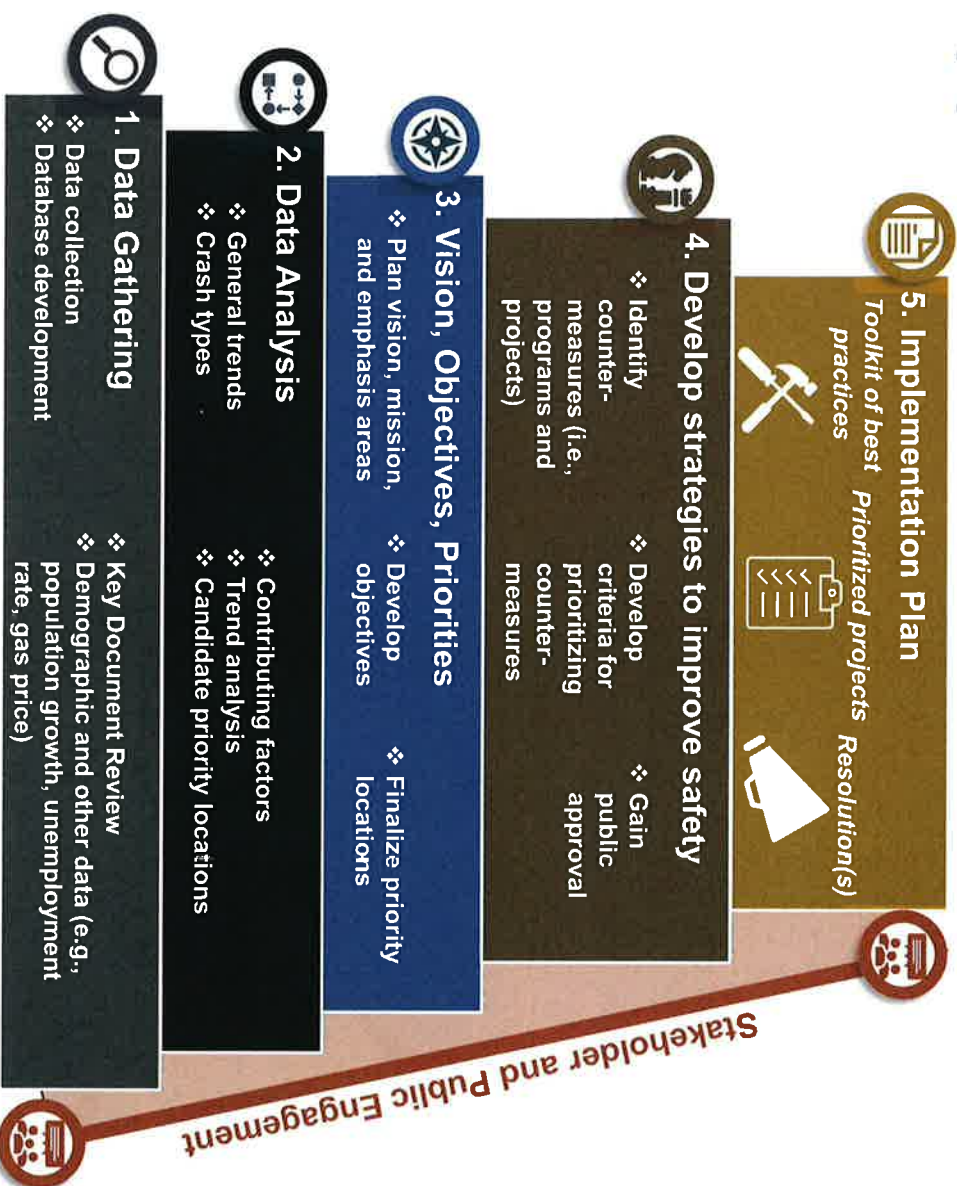
Analysis to understand existing safety challenges

Framework to address the current condition of the transportation network

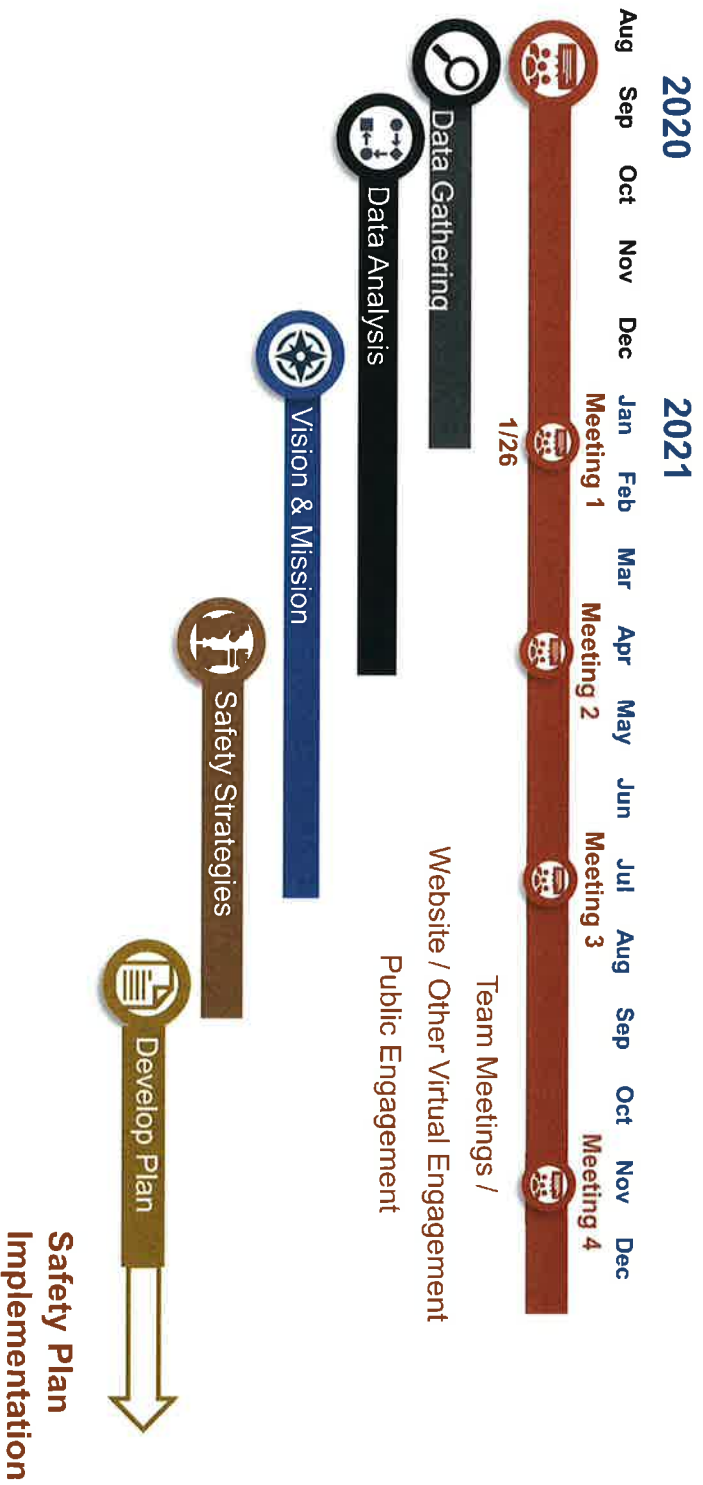
Blueprint for a safe transportation system for all users



Plan Approach



Plan Schedule



DRAFT Vision and Mission



A Safer El Paso County Road System for All

Reflect our community values by working towards zero transportation related deaths and reducing serious injuries through improved infrastructure and driver behavior utilizing the five E's:

- » Education
- » Encouragement
- » Engineering
- » Enforcement
- » Evaluation



Public Participation



- o Website: EPCSaferoads.com
- o Email: DOTSafetyPlan@elpasoco.com



El Paso County Road Safety Plan

Know the Road Facts

- W** Every **7 seconds**, someone is injured in a car crash.
- W** Every **15 minutes**, someone is killed.
- W** Many of the crashes occur during the workday or the daily commute.
- W** Crashes that happen during work related activities represent **40% of all crashes**.
- W** Motor vehicle injury costs were estimated at **\$445.6 billion**. Costs include wage and productivity losses, medical expenses, administrative expenses, motor vehicle property damage, and employer costs.

El Paso County's new Road Safety Plan aims to reduce deaths and to make the County safer for transit, walking, biking, or driving.



Tell Us What You Think! EPCCSaferoads.com

El Paso County Road Safety Plan

Not secure | epsaferoads.com/leave-comments

Apps Road & Bridge Plan Department of Public Home - El Paso County South Powers Info Public Meetings Home - Pikes Peak Transportation Impr CDOT Data Manage Other bookmarks

El Paso County Road Safety Study: Safety Issues

with ArcGIS Web Application

Instructions

Please identify any and all locations in the unincorporated areas of El Paso County (incorporated areas are grayed out) at which you have noticed hazardous conditions or behavior.

Step 1: Click on the Edit icon (a list with a pencil) to open the list of safety issue areas/hazardous conditions or behaviors you can choose from.

Step 2: Identify and select the issue type you are reporting in the edit legend.

Step 3: Zoom or pan into the location, click there, and use the comment box to describe the problem in further detail. If you find the location has already been submitted, you can click or tap on the existing point and provide additional comments to highlight your unique concern.

Step 4: Repeat for as many locations as desired.

NOTE: Incorporated areas are grayed out, we are looking for identified safety issues in the unincorporated areas of El Paso County. Roadway names will populate as you zoom into street level. You also can click on a roadway to see the road name. You also can move the Edit box around the screen or resize it by clicking on a corner or clicking and holding the title bar as you move it around.

Find address or place

24

25

26

27

28

29

30

31

32

33

34

35

36

37

38

39

40

41

42

43

44

45

46

47

48

49

50

51

52

53

54

55

56

57

58

59

60

61

62

63

64

65

66

67

68

69

70

71

72

73

74

75

76

77

78

79

80

81

82

83

84

85

86

87

88

89

90

91

92

93

94

95

96

97

98

99

100

101

102

103

104

105

106

107

108

109

110

111

112

113

114

115

116

117

118

119

120

121

122

123

124

125

126

127

128

129

130

131

132

133

134

135

136

137

138

139

140

141

142

143

144

145

146

147

148

149

150

151

152

153

154

155

156

157

158

159

160

161

162

163

164

165

166

167

168

169

170

171

172

173

174

175

176

177

178

179

180

181

182

183

184

185

186

187

188

189

190

191

192

193

194

195

196

197

198

199

200

201

202

203

204

205

206

207

208

209

210

211

212

213

214

215

216

217

218

219

220

221

222

223

224

225

226

227

228

229

230

231

232

233

234

235

236

237

238

239

240

241

242

243

244

245

246

247

248

249

250

251

252

253

254

255

256

257

258

259

260

261

262

263

264

265

266

267

268

269

270

271

272

273

274

275

276

277

278

279

280

281

282

283

284

285

286

287

288

289

290

291

292

293

294

295

296

297

298

299

300

301

302

303

304

305

306

307

308

309

310

311

312

313

314

315

316

317

318

319

320

321

322

323

324

325

326

327

328

329

330

331

332

333

334

335

336

337

338

339

340

341

342

343

344

345

346

347

348

349

350

351

352

353

354

355

356

357

358

359

360

361

362

363

364

365

366

367

368

369

370

371

372

373

374

375

376

377

378

379

380

381

382

383

384

385

386

387

388

389

390

391

392

393

394

395

396

397

398

399

400

401

402

403

404

405

406

407

408

409

410

411

412

413

414

415

416

417

418

419

420

421

422

423

424

425

426

427

428

429

430

431

432

433

434

435

436

437

438

439

440

441

442

443

444

445

446

447

448

449

450

451

452

453

454

455

456

457

458

459

460

461

462

463

464

465

466

467

468

469

470

471

472

473

474

475

476

477

478

479

480

481

482

483

484

485

486

487

488

489

490

491

492

493

494

495

496

497

498

499

500

501

502

503

504

505

506

507

508

509

510

511

512

513

514

515

516

517

518

519

520

521

522

523

524

525

526

527

528

529

530

531

532

533

534

535

536

537

538

539

540

541

542

543

544

545

546

547

548

549

550

551

552

553

554

555

556

557

558

559

560

561

562

563

564

565

566

567

568

569

570

571

572

573

574

575

576

577

578

579

580

581

582

583

584

585

586

587

588

589

590

591

592

593

594

595

596

597

598

599

600

601

602

603

604

605

606

607

608

609

610

611

612

613

614

615

616

617

618

619

620

621

622

623

624

625

626

627

628

629

630

631

632

633

634

635

636

637

638

639

640

641

642

643

644

645

646

647

648

649

650

651

652

653

654

655

656

657

658

659

660

661

662

663

664

665

666

667

668

669

670

671

672

673

674

675

676

677

678

679

680

681

682

683

684

685

686

687

688

689

690

691

692

693

694

695

696

697

698

699

700

701

702

703

704

705

706

707

708

709

710

711

712

713

714

715

716

717

718

719

720

721

722

723

724

725

726

727

728

729

730

731

732

733

734

735

736

737

738

739

740

741

742

743

744

745

746

747

748

749

750

751

752

753

754

755

756

757

758

759

760

761

762

763

764

765

766

767

768

769

770

771

772

773

774

775

776

777

778

779

780

781

782

783

784

785

786

787

788

789

790

791

792

793

794

795

796

797

798

799

800

801

802

803

804

805

806

807

808

809

810

811

812

813

814

815

816

817

818

819

820

821

822

823

824

825

826

827

828

829

830

831

832

833

834

835

836

837

838

839

840

841

842

843

844

845

846

847

848

849

850

851

852

853

854

855

856

857

858

859

860

861

862

863

864

865

866

867

868

869

870

871

872

873

874

875

876

877

878

879

880

881

882

883

884

885

886

887

888

889

890

891

892

893

894

895

896

897

898

899

900

901

902

903

904

905

906

907

908

909

910

911

912

913

914

915

916

917

918

919

920

921

922

923

924

925

926

927

928

929

930

931

932

933

934

935

936

937

938

939

940

941

942

943

944

945

946

947

948

949

950

951

952

953

954

955

956

957

958

959

960

961

962

963

964

965

966

967

968

969

970

971

972

973

974

975

976

977

978

979

980

981

982

983

984

985

986

987

988

989

990

991

992

993

994

995

996

997

998

999

Type here to search

211 PM 2/9/2021

20

21

22

23

24

25

26

27

28

29

30

31

32

33

34

35

36

37

38

39

40

41

42

43

44

45

46

47

48

49

50

51

52

53

54

55

56

57

58

59

60

61

62

63

64

65

66

67

68

69

70

71

72

73

74

75

76

77

78

79

80

81

82

83

84

85

86

87

88

89

90

91

92

93

94

95

96

97

98

99

100

101

102

103

104

105

106

107

108

109

110

111

112

113

114

115

116

117

118

119

120

121

122

123

124

125

126

127

128

129

130

131

132

133

134

135

136

137

138

139

140

141

142

143

144

145

146

147

148

149

150

151

152

153

154

155

156

157

158

159

160

161

162

163

164

165

166

167

168

169

170

171

172

173

174

175

176

177

178

179

180

181

182

183

184

185

186

187

188

189

190

191

192

193

194

195

196

197

198

199

200

201

202

203

204

205

206

207

208

209

210

211

212

213

214

215

216

217

218

219

220

221

222

223

224

225

226

227

228

229

230

231

232

233

234

235

236

237

238

239

240

241

242

243

244

245

246

247

248

249

250

251

252

253

254

255

256

257

258

259

260

261

262

263

264

265

266

267

268

269

270

271

272

273

274

275

276

277

278

279

280

281

282

283

284

285

286

287

288

289

290

291

292

293

294

295

296

297

298

299

300

301

302

303

304

305

306

307

308

309

310

311

312

313

314

315

316

317

318

319

320

321

322

323

324

325

326

327

328

329

330

331

332

333

334

335

336

337

338

339

340

341

342

343

344

345

346

347

348

349

350

351

352

353

354

355

356

357

358

359

360

361

362

363

364

365

366

367

368

369

370

371

372

373

374

375

376

377

378

379

380

381

382

383

384

385

386

387

388

389

390

391

392

393

394

395

396

397

398

399

400

401

402

403

404

405

406

407

408

409

410

411

412

413

414

415

416

417

418

419

420

421

422

423

424

425

426

427

428

429

430

431

432

433

434

435

436

437

438

439

440

441

442

443

444

445

446

447

448

449

450

451

452

453

454

455

456

457

458

459

460

461

462

463

464

465

466

467

468

469

470

471

472

473

474

475

476

477

478

479

480

481

482

483

484

485

486

487

488

489

490

491

492

493

494

495

496

497

498

499

500

501

502

503

504

505

506

507

508

509

510

511

512

513

514

515

516

517

518

519

520

521

522

523

524

525

526

527

528

529

530

531

532

533

534

535

536

537

538

539

540

541

542

543

544

545

546

547

54



El Paso County Highway Advisory Commission PPRTA Extension Project Scoring Information



*Victoria Chavez
Principal Transportation Planner*

*Jennifer Irvine
County Engineer*



**El Paso
County**
COLORADO

17 February 2021

PPRTA Capital Extension

- ▶ Pikes Peak Rural Transportation Authority is a 1% sales and use tax that is dedicated to capital projects (55%), maintenance projects (35%), and transit (10%).
- ▶ Capital Program has a sunset clause
 - ▶ 2005-2014 (ballot measure 2004)
 - ▶ 2015-2024 (ballot measure 2012)
 - ▶ 2025-2034 (*anticipated ballot measure 2022*)

Project Selection First Steps....

- ▶ EPC and the Pikes Peak Region have more transportation needs than funding to address.
- ▶ EPC staff is developing a draft list of specific capital projects and is developing recommendations for programs.
- ▶ Project scoring will not determine final project list but will provide an initial data driven process to help inform the project/program list.
- ▶ The list will need to be narrowed to fit within the proportion of EPC allocated revenue.

EPC Scoring Criteria

- ▶ Need to be based on easy to obtain data
- ▶ Considers and uses existing planning documents
- ▶ Considers road usage and condition
- ▶ Considers safety for all transportation users
- ▶ Considers equity, economic development, surrounding land uses, and vulnerable populations
- ▶ All criteria assume that all projects will have multimodal and ADA improvements evaluated and constructed

Pavement Maintenance Application (PMA)

- ▶ Projects with worse pavement condition score higher.
- ▶ 1 = good
- ▶ 2 = fair
- ▶ 3 = poor

Traffic Signal and Intersection Score

- ▶ Projects with worse conditions score higher.
 - ▶ 1 = issue other than below (turn lanes, ped improvement, etc.)
 - ▶ 2 = 1-6 years over useful life
 - ▶ 3 = 7+ years over useful life
 - ▶ 4 = meeting/soon to meet warrants

Bridge Sufficiency Rating

- ▶ The result of the formula is a percentage in which 100 percent represents a stable and functional bridge and zero percent represents a deficient bridge.
- ▶ 1 = 81+ (rating typically indicates need for maintenance)
- ▶ 2 = 51-80 (rating typically indicates need for rehabilitation)
- ▶ 3 = 0-50 (rating typically indicates need for replacement)

Functional Classification

- ▶ 1 = Local
- ▶ 2 = Minor Collector/Nonresidential Collector
- ▶ 3 = Major Collector
- ▶ 4 = Minor Arterial
- ▶ 5 = Major Arterial
- ▶ 6 = Above Major Arterial
- ▶ 1+ point if Major Collector or above and Gravel

Planning Studies

- ▶ **Drainage Basin Planning Studies:** Projects in studied basins have more available information on hydrology and drainage structures than ones in un-studied basins.
 - ▶ 0 = not in a studied basin
 - ▶ 1 = in a studied basin
- ▶ **Planning score** - based on whether the project was listed on the Major Transportation Corridor Plan (MTCP) and when the Plan estimated that the project would be needed.
 - ▶ 0 = not in any plan
 - ▶ 2 = in the MTCP or in a corridor study
 - ▶ 1 addition point if in other plans (PPACG LRTP, Trails Plan, etc.)
 - ▶ 1 additional point if a past PPRTA B list project

Safety

- ▶ **Accident Rating Score** - Safety Improvement on a road segment or intersection
 - ▶ 0 = not listed in PPACG Safety Chapter
 - ▶ 2 = is listed in PPACG Safety Chapter or listed as an existing safety concern
- ▶ http://www.ppacg.org/wp-content/uploads/2020/03/2045-Moving-Forward_FINAL_spreads_chp10.pdf

Vulnerable Populations

► Community Development Block Grant or Pikes Peak Enterprise Zone

► <https://admin.elpasoco.com/economic-development/#1512597186758-63ba17c8-ea02001c-4095>

- 1 = not in a designated area
- 2 = near the designated area
- 3 = in the designated area
- 1 additional point if in tract with high percent of people with disabilities
- 1 additional point if in tract with high present of minority populations
- 1 additional point if in tract with high percent of people 65+

► https://demography.dola.colorado.gov/CensusAPI_Map_2018/?lat=38.83008001147299&lng=-104.56375122070312&z=10&s=140&v=disabled&sn=jenks&cs=sh5&cl=7

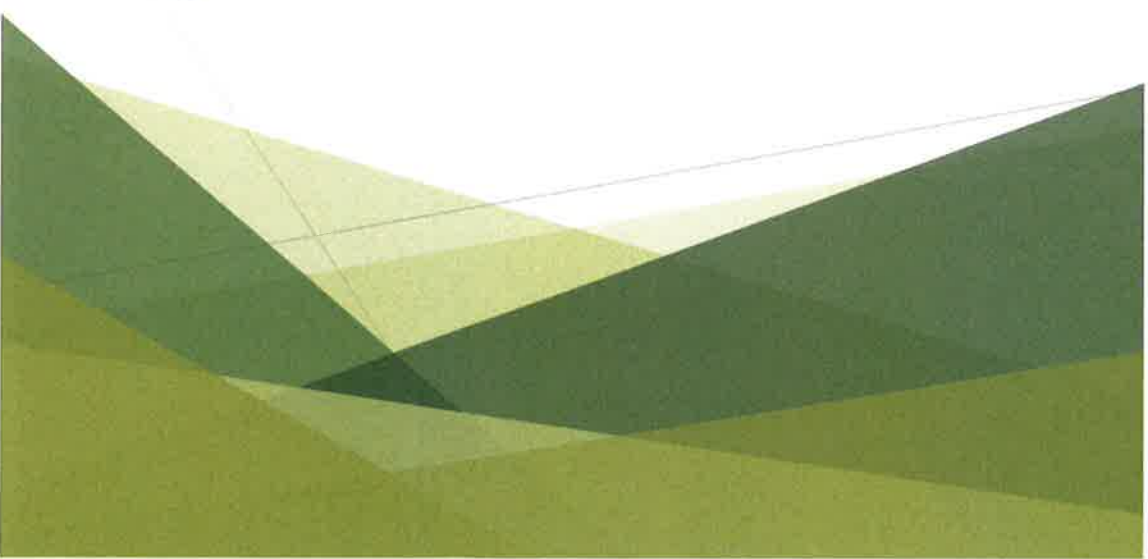
High Priority Location

- ▶ Does the project serve the needs of a growing population, economic driver or other need?
- ▶ Some examples may be military need, school, hospital, high growth area, support regional tourism, etc.
- ▶ 2 additional points if the project serves one or more of these needs

Questions?



**Promises Made,
Promises Kept.**



Customer Service Survey Report January 2021

Service requests Completed	287	
Surveys Returned	0	

1.) Overall satisfaction of El Paso County Department of Public Works

No Reply	0	#DIV/0!
Extremely dissatisfied	0	#DIV/0!
Moderately dissatisfied	0	#DIV/0!
Extremely satisfied	0	#DIV/0!
Grand Total	0	#DIV/0!

2.) Rate the quality of work that was performed

No Reply	0	#DIV/0!
Extremely dissatisfied	0	#DIV/0!
Moderately dissatisfied	0	#DIV/0!
Extremely satisfied	0	#DIV/0!
Grand Total	0	#DIV/0!

3.) Was customer service representative helpful

No Reply	0	#DIV/0!
Extremely helpful	0	#DIV/0!
Not at all helpful	0	#DIV/0!
Grand Total	0	100%

Service Requests

2/9/2021

(January 2021)

SR Type	Open	Cancelled	Completed	Referred to Other Jurisdiction	Totals
Concrete Repair	1	0	1	1	3
Crack Sealing	0	1	0	1	2
Dead Animal Removal	4	3	13	0	20
Drainage Maintenance	6	1	1	0	8
Dumping / Trash Removal	4	1	17	1	23
Grading / Gravel Repair	17	23	23	0	63
Guard Rails	3	0	0	0	3
Median / Right of Way Maintenance	2	0	0	0	2
Personal Property Damage	0	0	1	0	1
Pothole	4	3	10	1	18
Road Painting / Striping	1	3	0	3	7
Shoulder Maintenance	1	0	1	0	2
Snow and Ice Control	1	7	24	13	45
Street Lights	0	4	0	4	8
Street Signage	44	1	14	1	60
Street Sweeping	0	0	1	0	1
Traffic Signals	1	0	5	3	9
Tree Trimming / Removal	2	1	6	0	9
Washout	1	2	0	0	3
Total SR's	92	50	117	28	287